

Bark Beetle Academy

University of Florida & Israel Agricultural Research Organization

Presenters:

Jiri Hulcr, University of Florida – School of Forest Resource and Conservation

Andrea Lucky, University of Florida – Entomology Department

Day 1: Introduction

Morning (J. Hulcr):

9:00 Welcome and intro: What are bark and ambrosia beetles?

9:30 pre-test

10:00 The history and politics of bark beetle impacts

11:00 The world's most invasive bark & ambrosia beetles

Afternoon (A. Lucky):

The first hands-on guided session in microscope lab

13:15 Modern insect and beetle classification

13:45 External anatomy characters used in keys

14:30 Scolytine morphological terminology: Find a character!

Day 2: Bark beetle pests: Israeli and global scope (with guest speakers)

Morning:

9:00 The most important bark beetles in Israel (Zvi Mendel)

10:00 *Euwallacea fornicatus* complex - global perspective (J. Hulcr)

10:30 Laurel Wilt, a deadly killer of Lauraceae (J. Hulcr)

11:00 *Tomicus*, *Ips* and *Dendroctonus* beetles (J. Hulcr)

11:30 Fungi associated with Scolytinae in Israel (Stanley Freeman)

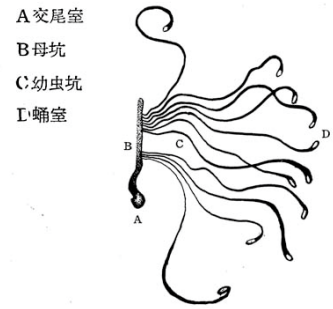
Afternoon: the worst pests and beetle-borne tree diseases

13:00 Online resources on bark and ambrosia beetles

14:00 www.barkbeetles.info – how to use it

15:00 A short walk through S. L. Wood's key





Day 3: Filed trip! (J. Hulcr & A. Lucky)

9:00 trip to a forest

- start your own reference collection!
- manual techniques for bark beetle collecting
- bark beetle trapping
- demonstration and discussion of management approaches
- how to submit a sample for expert diagnosis

Day 4: Hard-core identification training using 40 reference collections supplied from the University of Florida (see separate handout for details)

morning:

9:00 hands-on, guided identification

12:00 lunch break

12:00 hands-on, guided identification

Day 4

morning:

9:00 More guided identification

11:00 Exercise: draw a beetle!

11:30 Test

afternoon:

13:00 More guided identification

14:00 Personal collection identification and specimen swap

15:00 Optional: Less common bark beetle genera

15:00 Optional: The "other" wood borers